

PAOLI SOCKETS



The new Paoli sockets are an unprecedented product and the result of a long and complex engineering research. The continuous consultation with many customers such as **ORECA** THE MOTORSPORT COMPANY, **NASCAR** and many others has meant that the technological development of Paoli sockets went hand in hand with the real needs of the teams in terms of **VERSATILITY**, **SAFETY**, **MATERIALS** and **MAINTENANCE**.

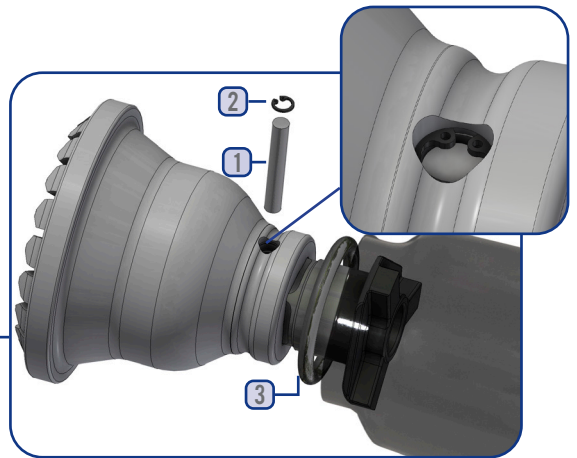
- Three different materials: titanium, special steel and aeronautical aluminium. The first and the second are suitable for the race application, the third one is suitable for non-intensive use and torque wrench.
- Innovative design, attractive shapes and aesthetically pleasing.
- Accuracy in fitting the socket to the square drive, perfect clearance that allows the socket to be assembled and disassembled just by hand.
- Innovative safety system to insert the pin through the socket/square drive hole:
 - Unbalance of the center of the pin on the side of the blind hole
 - Elastic ring to prevent pin ejection
 - Cover O-ring

Maximum safety, assembly precision and reduced assembly times.

- Insertion of service holes for maintenance of magnets: replacing magnets is quick and easy, with a simple plug-locator.
- Internal 'O' ring retaining nut made from new Paoli Sockets material. The customized resin gives the socket an ideal grip with its high gripping power.
- The Paoli Sockets Service Kit for the maintenance and replacement of worn parts contains everything needed to work on the socket simply and safely. A brief instruction manual indicates the optimum way to carry out operations (E.g. replacement and subsequent refinement of magnets).

Internal 'O' ring retaining nut especially made for Paoli Sockets.

Replacing magnets is quick and easy thanks to rear service holes.



INNOVATIVE SAFETY SYSTEM

- 1 Insert the locking pin in transverse hole of the wheel nut socket.
- 2 Place the elastic ring for bore in the seat formed in the hole where the locking pin was positioned, to prevent it from escaping.
- 3 Place the retaining O-ring in the housing on the collar of the wheel nut socket.

Accuracy in fitting the socket to the wrench (minimal clearance).

Also available in aeronautical aluminium, suitable for torque wrench applications.

Innovative design, attractive shapes and aesthetically pleasing.

MANUAL



Operating and Maintenance Manual



WWW.PAOLI.NET | SALES@PAOLI.NET | +39.0522.364511

"GHOST MAGNETS" TECHNOLOGY

We have developed the new wheel socket with "ghost magnets" technology.

Designed for the **PORSCHE 992 GT3 R**, the wheel socket with "ghost magnets" technology features Paoli's patented Spline system and an innovative retention system for the center lock nuts. The magnets are fully surrounded and cannot be lost or damaged during use. It's an advanced technology also used in wheel sockets **developed for NASCAR** and **BMW M4 GT3**, but our plan is to apply it to all new Paoli wheel sockets equipped with magnets.



GHOST MAGNETS



VISIBLE MAGNETS

SPLINE DRIVE TECHNOLOGY

From **PAOLI'S EXPERIENCE** and its cutting edge sectorial engineering research a new technology is born: the **SPLINE DRIVE**. The work in R&D of the Paoli highly skilled technicians and the partnership with the most recognized racing teams has allowed the development of an innovative and greatly performing product. A spline drive wheel gun differs from a square drive tool mainly in the teeth that connect the anvil with the socket. This means the following advantages:

- More **EFFICIENT CONNECTION** than traditional square drive anvil thanks to the elimination of gap and vibrations
- More **DURABILITY** due to less wear
- More comfort and **SAFETY FOR THE OPERATOR** thanks to the removal of the pin

ANVIL-SOCKET FIXING SYSTEM!

The wheel nut socket is connected to the anvil by a cutting edge fixing screw system.



SOCKETS CONFIGURATOR

BEST PRACTICE	CODE	DRIVE	MATERIAL	STOCK	PAGE	BEST PRACTICE	CODE	DRIVE	MATERIAL	STOCK	PAGE
F488/F296	B.28.0104	Spline	Steel	On stock	87	MCLAREN 720 GT3/GT3 EVO/GTX	B.28.0149	Square 1"	Titanium	On stock	96
	B.28.0106	Square 1"	Steel	On stock	87	LAMBORGHINI HURACAN & AUDI RSR	B.28.0095	Square 1"	Steel	On demand	100
	B.28.0107	Square 1"	Titanium	On stock	88	FORMULA 2 - M.Y. 2024	B.28.0142	Spline	Titanium	On stock	92
	B.28.0090	Spline	Titanium	On stock	88		B.28.0143	Square 1"	Steel	On stock	92
	B.28.0136	Square 1"	Ergal	On stock	89	F3	B.28.0034	Square 1"	Steel	On stock	93
	B.28.0058	Square 1"	Titanium	On demand	100	INDYCAR	B.28.0080	Spline	Titanium	On stock	97
F488/F296 & FERRARI 599XX	B.28.0151	Spline	Steel	On demand	101		B.28.0033	Square 1"	Titanium	On stock	97
HURACAN GT3 & AUDI R8 GT3	B.28.0108	Spline	Titanium	On stock	89	MERCEDES AMG GT3	B.28.0133	Square 1"	Titanium	On stock	94
	B.28.0081	Spline	Steel	On stock	90		B.28.0137	Spline	Titanium	On stock	94
	B.28.0050	Square 1"	Steel	On stock	90		B.28.0119	Square 1"	Ergal	On demand	102
PORSCHE 911 GT3-R	B.28.0139	Spline	Titanium	On stock	91	BMW M4 GT3	B.28.0132	Spline	Titanium	On stock	95
	B.28.0140	Square 1"	Titanium	On stock	91		B.28.0131	Square 1"	Titanium	On stock	95
PORSCHE 911 CUP	B.28.0052	Square 1"	Ergal	On stock	92		B.28.0153	Square 1	Steel	On stock	96
						SUPER FORMULA	B.28.0152	Square 1"	Steel	On stock	98
						ASTON MARTIN	B.28.0144	Spline	Titanium	On demand	102

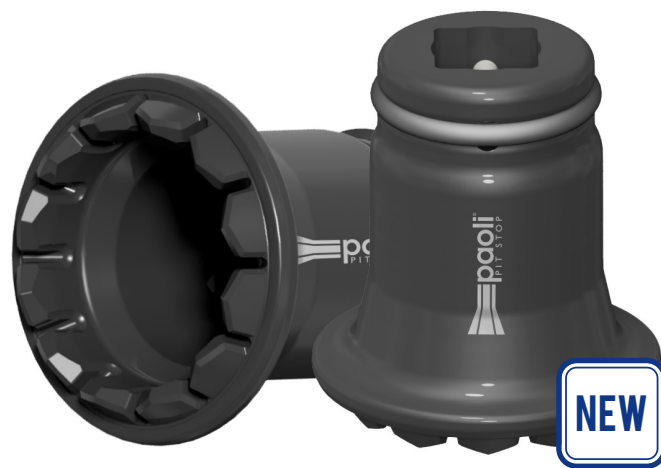
ON STOCK

BEST PRACTICE → GT3 SERIES



F488/F296

CODE	B.28.0104
DRIVE	Paoli Spline
MATERIAL	steel
RETENTION SYSTEM	-
TEETH NUMBER	12



F488/F296

CODE	B.28.0106
DRIVE	1"
MATERIAL	steel
RETENTION SYSTEM	-
TEETH NUMBER	12

BEST PRACTICE → GT3 SERIES



F488/F296

CODE	B.28.0107
DRIVE	1"
MATERIAL	titanium
RETENTION SYSTEM	-
TEETH NUMBER	12



F488/F296

CODE	B.28.0090
DRIVE	Paoli Spline
MATERIAL	titanium
RETENTION SYSTEM	-
TEETH NUMBER	12

BEST PRACTICE → FERRARI CHALLENGE



F488/F296

CODE	B.28.0136
DRIVE	1"
MATERIAL	ergal
RETENTION SYSTEM	circlip
TEETH NUMBER	20

BEST PRACTICE → GT3 SERIES



HURACAN GT3 / AUDI R8 GT3

CODE	B.28.0108
DRIVE	Paoli Spline
MATERIAL	titanium
RETENTION SYSTEM	magnets
TEETH NUMBER	10

BEST PRACTICE → LAMBORGHINI GT3 SERIES



HURACAN GT3

CODE	B.28.0081
DRIVE	Paoli Spline
MATERIAL	steel
RETENTION SYSTEM	magnets
TEETH NUMBER	10



HURACAN GT3

CODE	B.28.0050
SQUARE DRIVE	1"
MATERIAL	steel
RETENTION SYSTEM	magnets
TEETH NUMBER	10

BEST PRACTICE → PORSCHE GT3 SERIES



GHOST MAGNETS SOCKETS - PORSCHE 911 GT3-R

CODE	B.28.0139
DRIVE	Paoli Spline
MATERIAL	titanium
RETENTION SYSTEM	ghost magnets
TEETH NUMBER	18



GHOST MAGNETS SOCKETS - PORSCHE 911 GT3-R

CODE	B.28.0140
SQUARE DRIVE	1"
MATERIAL	titanium
RETENTION SYSTEM	ghost magnets
TEETH NUMBER	18

BEST PRACTICE → PORSCHE CUP



ALUMINIUM SOCKET:
ONLY FOR TORQUE
WRENCH APPLICATION

PORSCHE 911 CUP

CODE	B.28.0052
DRIVE	1"
MATERIAL	ergal
RETENTION SYSTEM	o-ring
TEETH NUMBER	15

BEST PRACTICE → FORMULA 2 - M.Y. 2024



B.28.0143

B.28.0142

FORMULA 2 - M.Y. 2024

CODE	B.28.0142	B.28.0143
DRIVE	Paoli Spline	1"
MATERIAL	titanium	steel
RETENTION SYSTEM	circlip and magnets	circlip and magnets
TEETH NUMBER	16	16

BEST PRACTICE → F3



F3

CODE	B.28.0034
DRIVE	1"
MATERIAL	steel
RETENTION SYSTEM	spring retainers



BEST PRACTICE → GT3 SERIES



MERCEDES AMG GT3

CODE	B.28.0133
DRIVE	1"
MATERIAL	titanium
RETENTION SYSTEM	-
TEETH NUMBER	12

MERCEDES AMG GT3

CODE	B.28.0137
DRIVE	Paoli Spline
MATERIAL	titanium
RETENTION SYSTEM	-
TEETH NUMBER	12

BEST PRACTICE → GT3 SERIES



GHOST MAGNETS SOCKETS - BMW M4 GT3

CODE	B.28.0132
DRIVE	Paoli Spline
MATERIAL	titanium
RETENTION SYSTEM	ghost magnets
TEETH NUMBER	12

GHOST MAGNETS SOCKETS - BMW M4 GT3

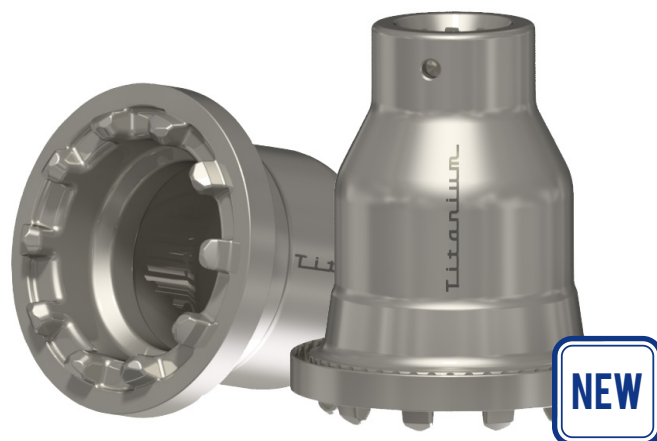
CODE	B.28.0131
DRIVE	1"
MATERIAL	titanium
RETENTION SYSTEM	ghost magnets
TEETH NUMBER	12

BEST PRACTICE → GT3 SERIES



GHOST MAGNETS SOCKETS - BMW M4 GT3

CODE	B.28.0153
DRIVE	1"
MATERIAL	steel
RETENTION SYSTEM	ghost magnets
TEETH NUMBER	12



GHOST MAGNETS SOCKETS - MCLAREN 720 GT3/GT3 EVO/GTX

CODE	B.28.0149
DRIVE	1"
MATERIAL	titanium
RETENTION SYSTEM	ghost magnets
TEETH NUMBER	10

BEST PRACTICE → INDYCAR



INDYCAR

CODE	B.28.0080
DRIVE	Paoli Spline
MATERIAL	titanium
RETENTION SYSTEM	magnets and o-ring
TEETH NUMBER	20



INDYCAR

CODE	B.28.0033
DRIVE	1"
MATERIAL	titanium
RETENTION SYSTEM	magnets and o-ring
TEETH NUMBER	20



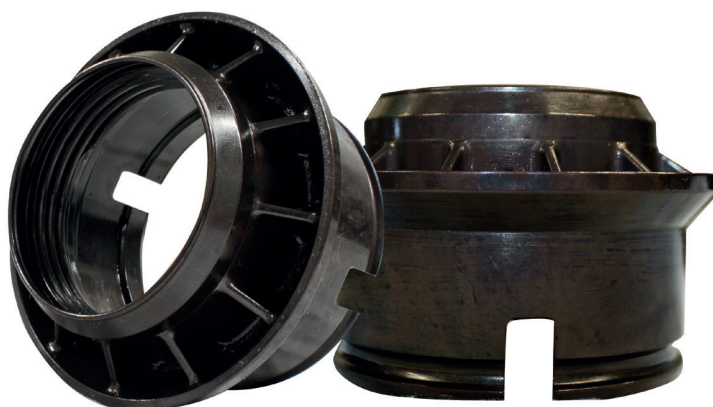
BEST PRACTICE → SUPER FORMULA



SUPER FORMULA

CODE	B.28.0152
DRIVE	1"
MATERIAL	steel
RETENTION SYSTEM	circlip

PAOLI WHEEL NUTS



COMPATIBLE WITH F488/F296

CODE	VERSION	DESCRIPTION
B.32.0030	LH - aerospace steel	with slots
B.32.0031	RH - aerospace steel	with slots

ON DEMAND WE ARE ABLE TO PRODUCE AND SUPPLY MORE WHEEL NUTS FOR DIFFERENT SPECIFIC NEEDS

ON DEMAND

BEST PRACTICE → GT3 SERIES



LAMBORGHINI HURACAN & AUDI RSR

CODE	B.28.0095
DRIVE	1"
MATERIAL	steel
RETENTION SYSTEM	magnets
TEETH NUMBER	10



F488/F296

CODE	B.28.0058
DRIVE	1"
MATERIAL	titanium
RETENTION SYSTEM	-
TEETH NUMBER	24

BEST PRACTICE → F488/F296 CHALLENGE - FERRARI 599XX



NEW

F488/F296 & FERRARI 599XX

CODE	B.28.0151
DRIVE	Paoli Spline
MATERIAL	steel
RETENTION SYSTEM	circlip
TEETH NUMBER	20



BEST PRACTICE → GT3 SERIES



MERCEDES AMG GT3

CODE	B.28.0119
DRIVE	1"
MATERIAL	ergal
RETENTION SYSTEM	-
TEETH NUMBER	24

BEST PRACTICE → GT3 SERIES



ASTON MARTIN

CODE	B.28.0144
DRIVE	Paoli Spline
MATERIAL	titanium
RETENTION SYSTEM	-
TEETH NUMBER	22

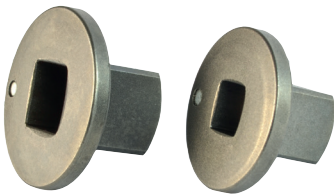
SPLINE SOCKETS SERVICE KIT



CODE: B.23.0222
Spline anvil-socket connection kit.

- The kit includes:
- 1 adjustable hook wrench with round pin
 - 3 disc springs
 - 3 self-locking washers
 - 1 axial retaining screw

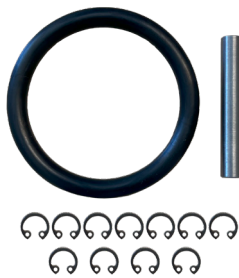
INSERT ADAPTERS



Reccomended just for garage use.
With this compact insert adapter to a bigger square drive the overall length is reduced to an absolute minimum.
The insert adapter sticks to the socket by means of a magnet.

CODE	WHEEL GUN	SOCKETS
B.29.0001	1/2"	3/4"
B.29.0002	3/4"	1"

SOCKET RINGS, RETAINERS & SEEGER



WARNING!

Always ensure the correct installation of the retainer to avoid the risks of working with a loose socket!

CODE	RINGS	RETAINERS	SEEGER
B.28.0107	B.30.02.0004	B.30.01.0014	D.09.08.0043
B.28.0106			
B.28.0136			
B.28.0058			
B.28.0050			
B.28.0140			
B.28.0063			
B.28.0052			
B.28.0095			
B.28.0034			
B.28.0143			
B.28.0116			
B.28.0033			
B.28.0133			
B.28.0119			
B.28.0131			
B.28.0062			
	B.30.02.0008		

